



# **Sika Architextures®** Architectural Coatings for Monotek® Sheet – Cavity Construction



## Coatings made in New Zealand for New Zealand conditions

Sika Architectures® is a range of coating and cladding systems, created and formulated in New Zealand to provide New Zealand architects with the design freedom they desire.

The Architectures® range of coatings comes in a wide variety of textures and colours, and is suitable for use on an extensive range of claddings – EIFS, Monotek®, concrete, masonry, etc – giving Architects incredible creative flexibility.

### Monotek®

This brochure provides information on the Sika Architectures® system for use in conjunction with Monotek® Sheet – Cavity Construction.

Monotek® is a fibre cement sheet cladding manufactured and supplied by James Hardie Ltd.

### Compliance

Coatings and claddings need to be more than just good looking. They have to be able to withstand New Zealand's demanding environment. The Sika Architectures® range is well proven, both in the field (with more than 30 years of use) and in the laboratory.

Fibre cement sheet is an approved cladding option under Acceptable Solution E2/AS1 of the New Zealand Building Code.

Furthermore, Monotek® Sheet – Cavity Construction is BRANZ appraised, and Sika Architectures® jointing and coatings systems have been tested by BRANZ to their EM4 standard.

### Applicator Network

The application of any coating system is critical to its success. Sika has a nationwide network of specialist approved applicators to ensure successful installation. These approved applicators are independent companies who, through training and experience, have demonstrated the high level of workmanship required by Sika and our customers.



For information on the use of Sika's Architectures® coating range on other substrates – Monotek®, concrete, masonry, etc – please contact us on

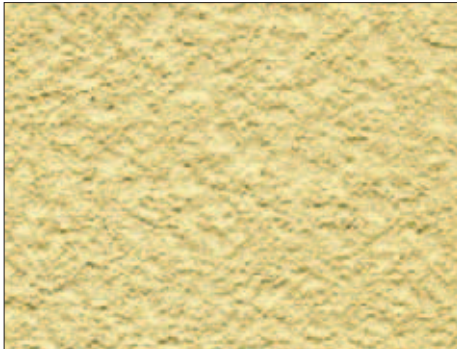
**0800 SIKAZ (0800 745 269)**

**[www.architextures.co.nz](http://www.architextures.co.nz)**

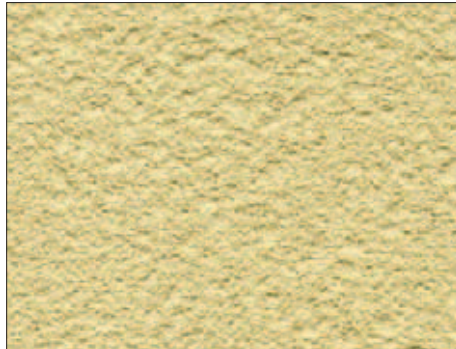
# Sika Architectures® Finishes

There is an extensive range of Sika Architectures® coating options available, allowing creative freedom with colour and texture.

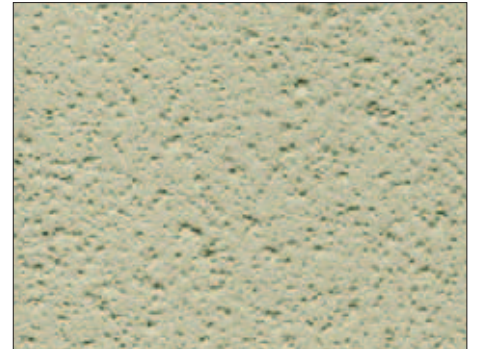
The Sika Architectures® range of finishes is achieved through the use of different plaster options, overcoated with a variety of different flexible acrylic resin coatings that can be applied and finished in a variety of techniques.



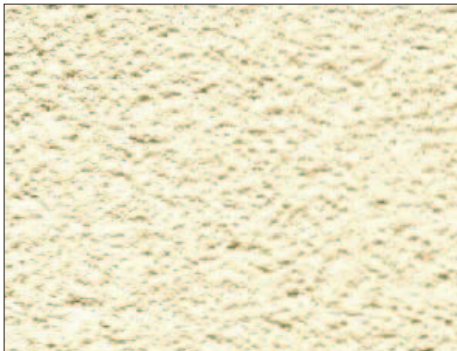
Pretexture Coarse



Pretexture Medium



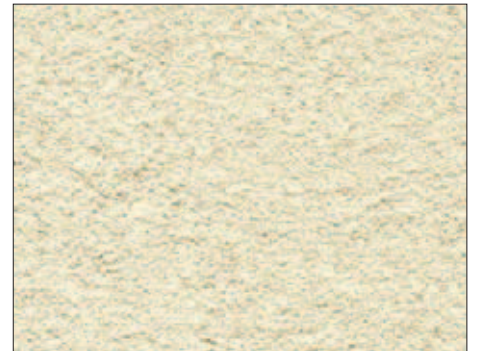
Pretexture Fine



Esterno Spraykote Coarse



Esterno Spraykote Medium



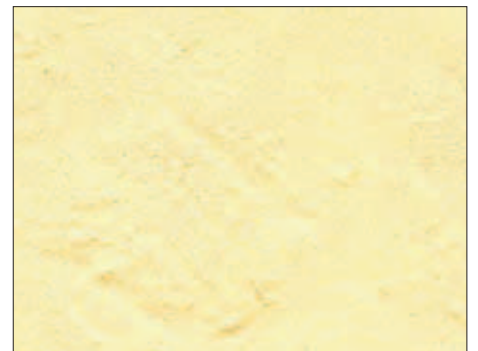
Esterno Spraykote Fine



Esterno Spongekote



Adobekote



Adobeplast



Leatherkote

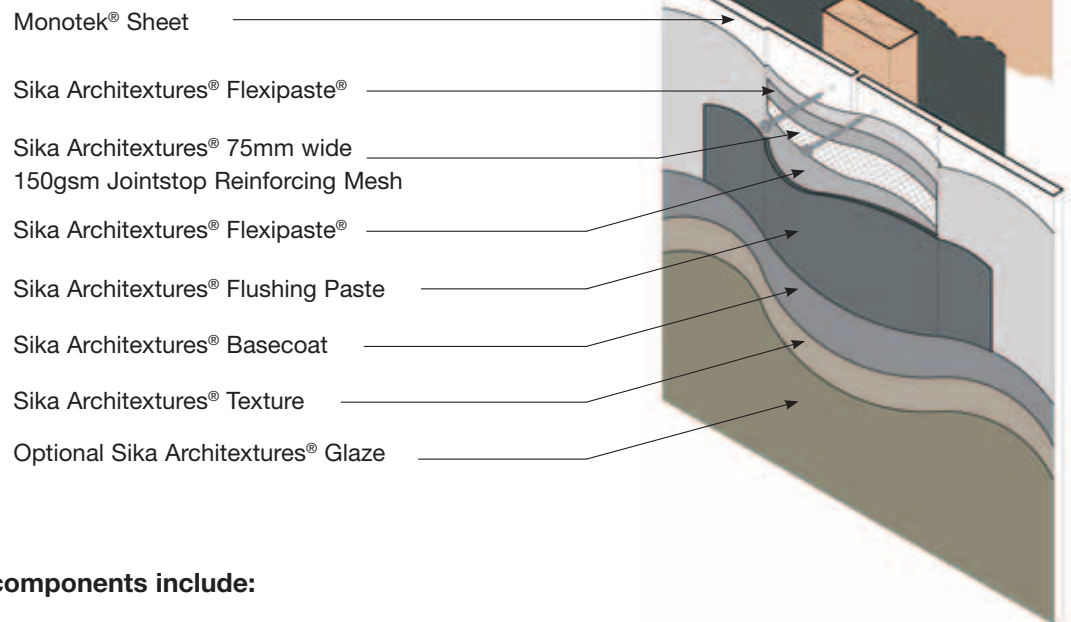


Stonekote



Scratchkote

## Architextures® Coatings on Monotek® Sheet – Cavity Construction



### The system components include:

<b>Monotek® sheet</b>	Monotek® (fibre cement cladding) installed in accordance with James Hardie Ltd's recommendations, over 18mm thick x 45mm wide, H3.1 treated timber battens.
<b>Flexipaste®</b>	Flexible acrylic resin based material for flush filling joints between the recessed sheet edges of Monotek® sheets.
<b>Jointstop Mesh</b>	150gms/m <sup>2</sup> alkali resistant fiberglass reinforcing mesh used in the Flexipaste® jointing system.
<b>Flushing Paste</b>	Flexible compound for flush finishing joints in Monotek® sheets.
<b>Basecoat</b>	Flexible, coloured, acrylic resin based, high build coating to provide necessary weatherproofing properties to protect the substrate and cladding system.
<b>Texture / Finish</b>	Range of trowel or spray applied, acrylic resin, or acrylic-modified cement plaster texture options, to give a wide range of aesthetic effects/finishes.
<b>Glaze</b>	Range of glaze finishes applied over Sika Architextures® Basecoat and texture options to improve durability, dirt shedding properties or achieve required aesthetic finish.

